




Pro-3600 APP
Advanced Vibration Diagnosis Instrument
Operation Manual
V1.1

Contents

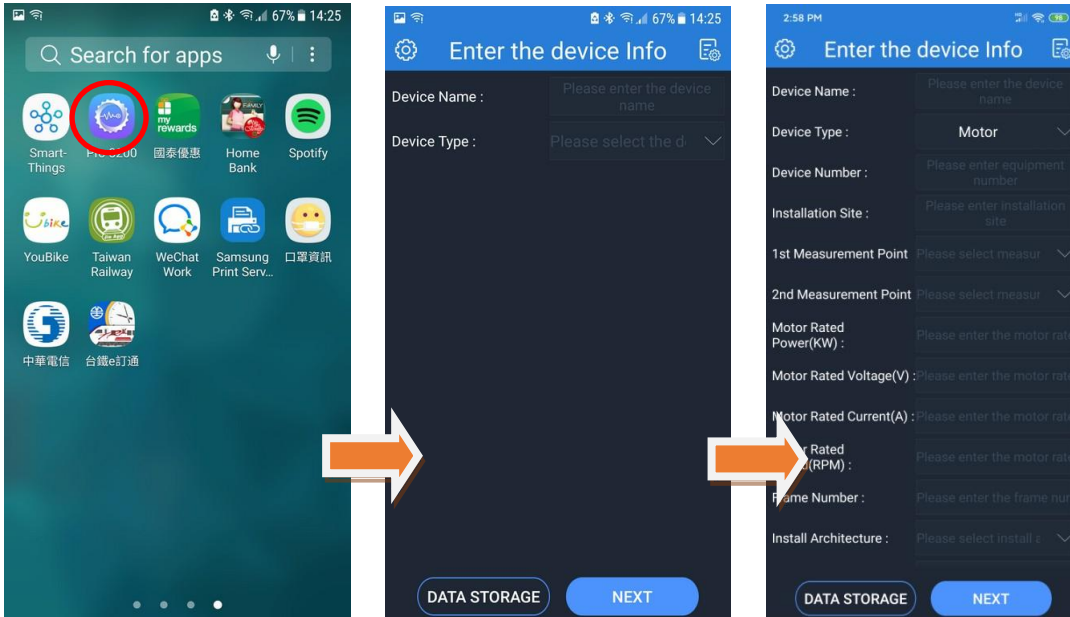
Getting Start	3
Environment settings	5
1. Enter device information.....	5
2. Diagnostic parameters (refer to PMS).....	5
Measurement, Analysis, Diagnosis	7
Report export	10

Getting Start

1 Launch the Pro-3600 APP application

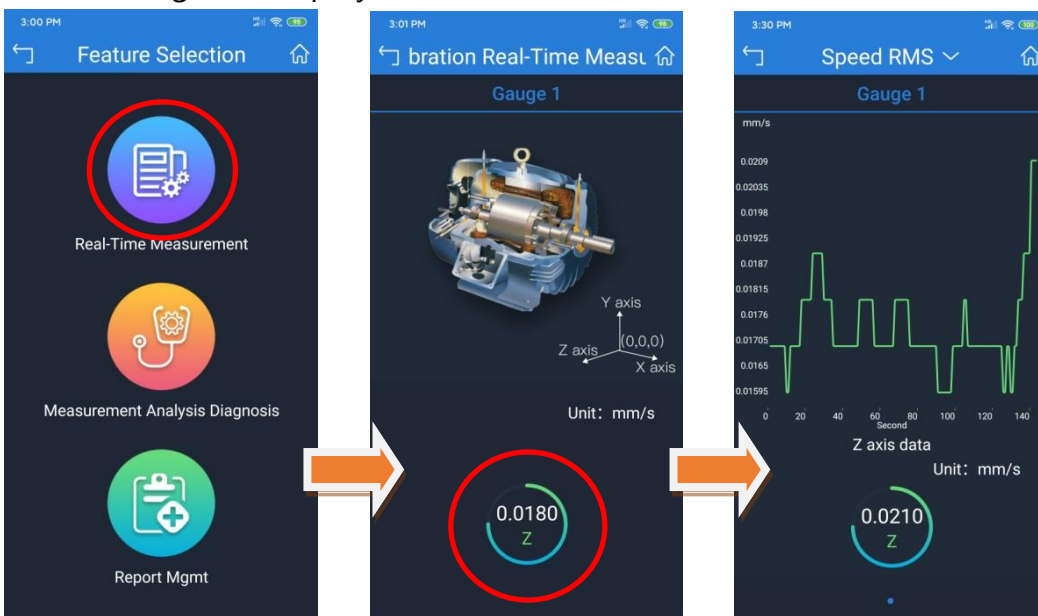
Click on the Pro-3600 Vibration Diagnostic App  on the Windows desktop. Enter the device name and type.

Fill in equipment information and specifications.



2 Start signal monitoring

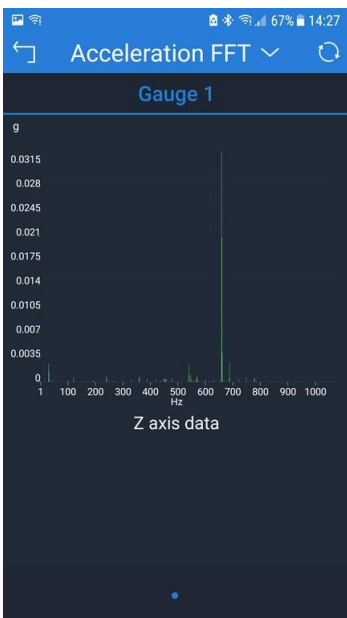
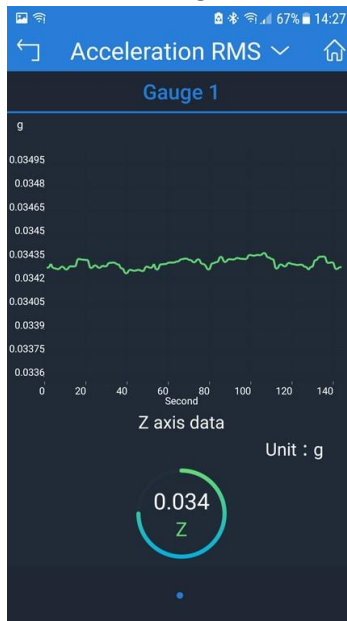
Click the "Real-time Measurement" button, and the real-time vibration monitoring data will begin to display.



3 View monitoring information

The upper selection button can select "Velocity RMS", "Acceleration RMS", "Velocity FFT", "Acceleration FFT", "Kurtosis", "Displacement", and you can see the original vibration value waveform and real-time frequency spectrum on the screen .

The following are the various monitoring screen icons.



Environment settings

1. Enter device information

Equipment data can be divided into three categories of parameters :

The first category is equipment name, type, number, installation location.

The second category is motor basic specification information, content measurement location, motor rated power, motor rated power, voltage, current, rated speed, motor frame number, frequency, load, etc.

The third category is diagnostic parameter information.



2. Diagnostic parameters (refer to PMS)

PMS parameters are described as follows:

Field	Description
Sample Length	Keep it the same as DAQ setting (Initial recommended value : 8192)
Sample Rate	Keep it the same as DAQ setting (Initial recommended value : 16000)

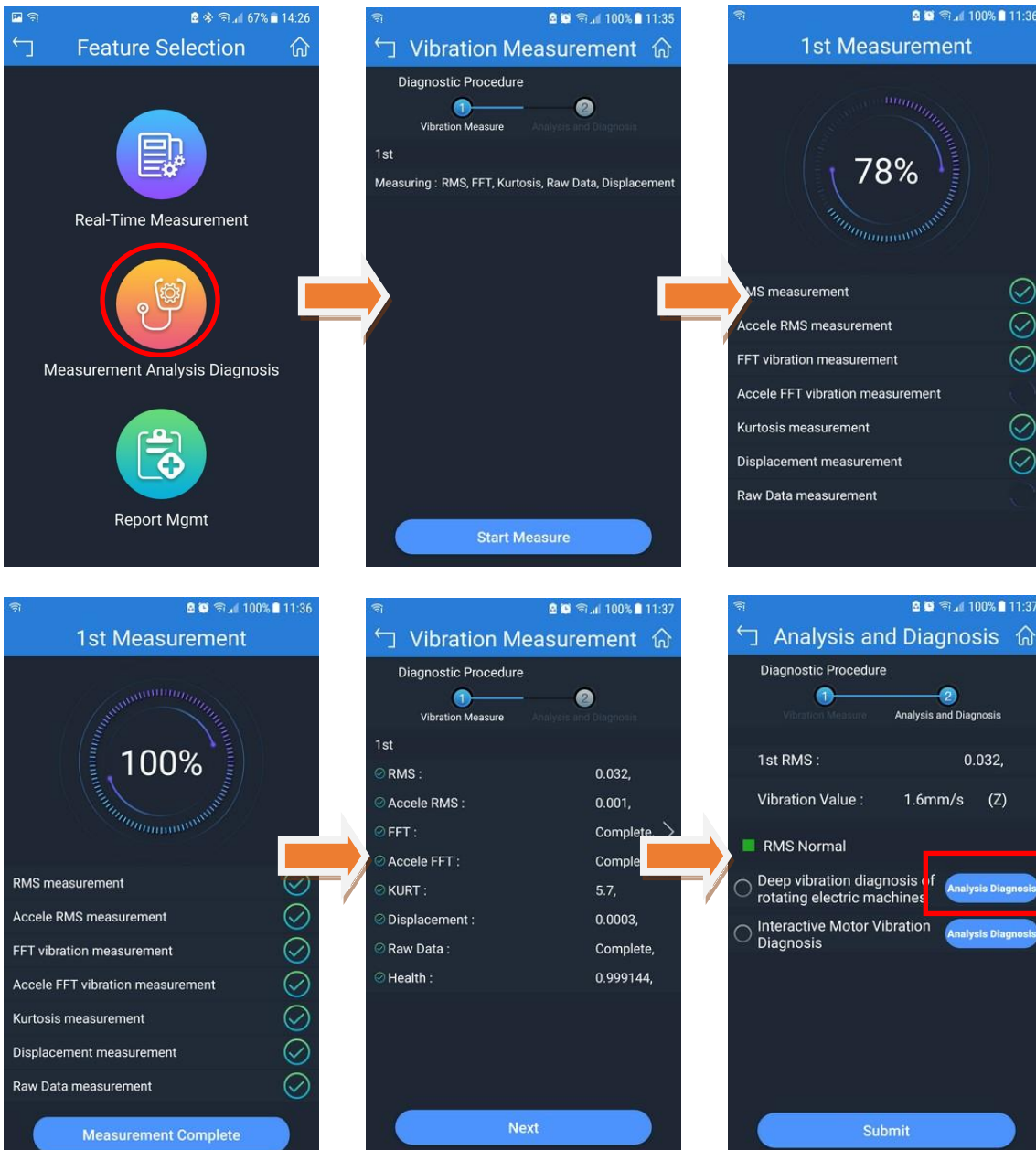
Pro-3600 APP Operation Manual

Fa (Spinning) in RPM	Motor spinning speed in RPM
Threshold	There are 17 known defects. The application will calculate the confidence level of each defects. Only when the confident level > Threshold will be shown in the diagnosis information field.
Ball Diameter	Diameter of balls
Bearing Diameter	The theoretical median diameter of a bearing, which passes through the center of the balls.
Number of Balls	Number of balls
Contact Angle	Contact Angle
Inner Frequency	Ball Pass Frequency of Inner Ring
Outer Frequency	Ball Pass Frequency of Outer Ring
Roller Frequency	Ball Spin Frequency
Number of Rotors	Number of rotor bars in a motor
Fp(Driven Gear)	The output speed of a gear box
Number of Gears	The number of teeth of first driven gear.
Low frequency	Ignore frequency lower than low frequency
High frequency	Ignore frequency higher than high frequency

Measurement, Analysis, Diagnosis

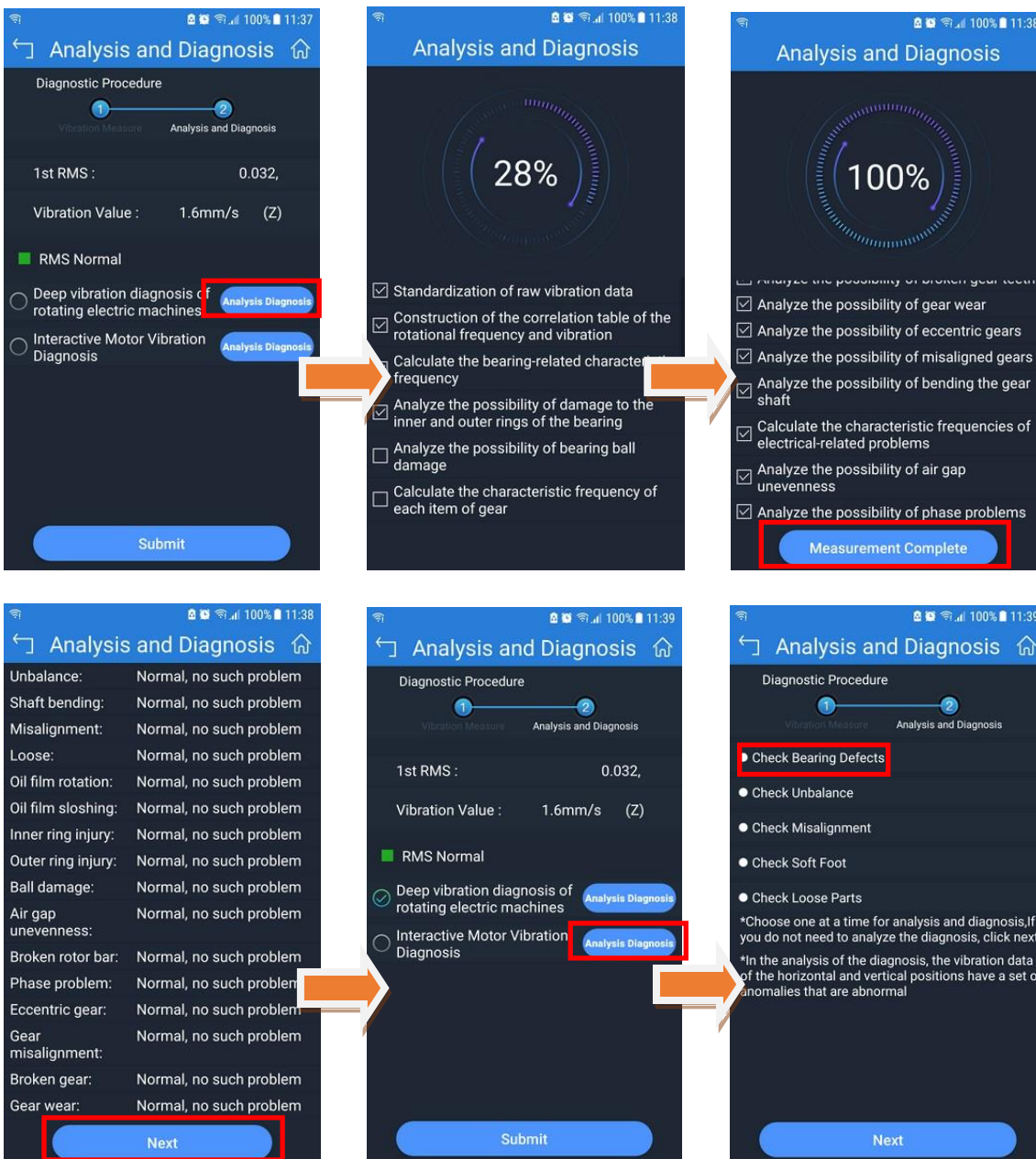
Enter device information, press the "Measurement, Analysis, Diagnosis" button to enter the measurement analysis and diagnosis mode. The diagnosis of mechanical equipment is closely related to the mechanical and electrical characteristics of the equipment. For example, the rated power and speed of the motor are critical to the diagnosis of the motor. For bearings, bearing diagnosis requires more bearing-related information. An equipment project is a collection of diagnostic information required for the diagnosis of specified mechanical equipment.

Please follow the diagram below :

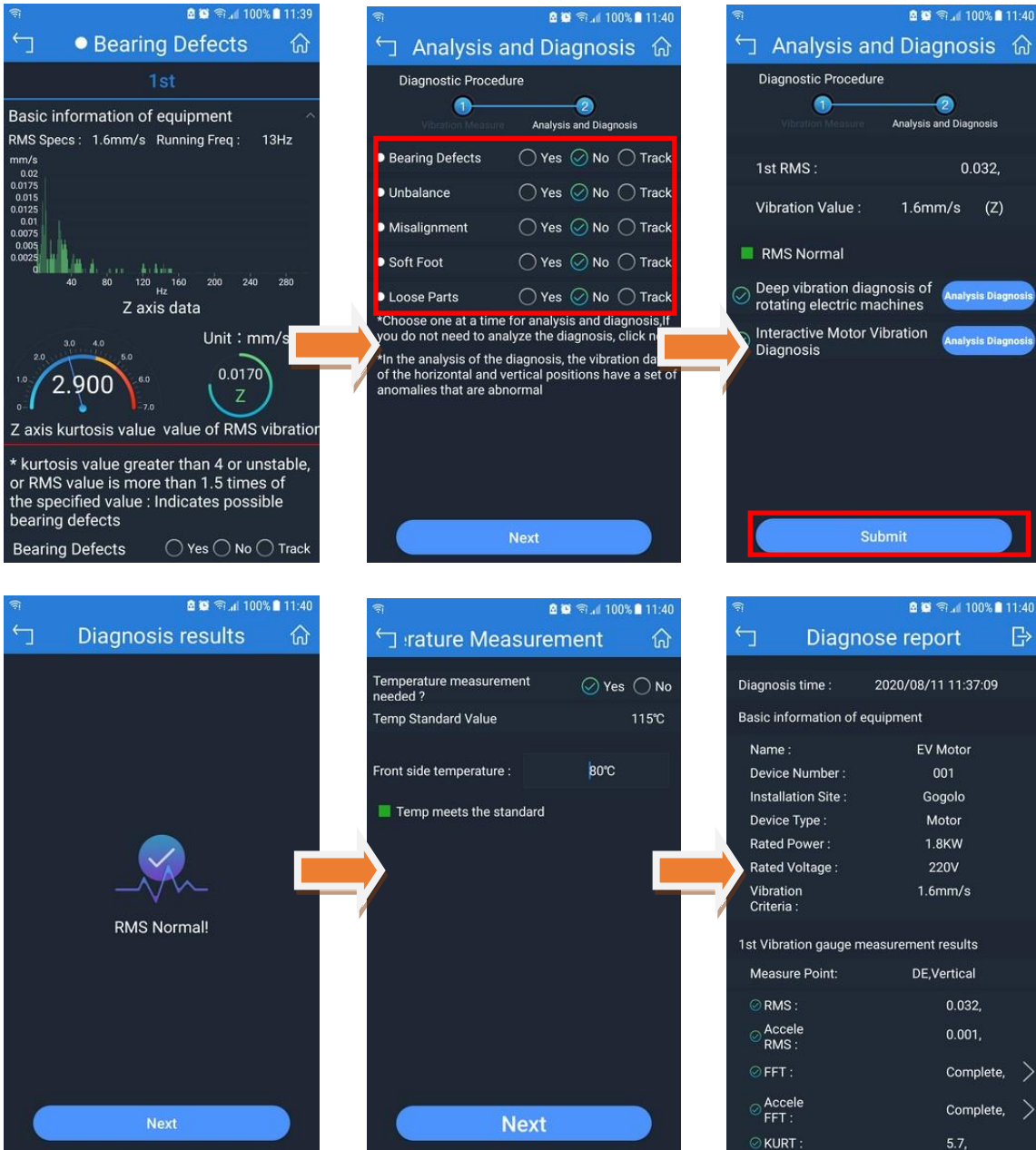


After "measurement", if the RMS exceeds the standard, you can "enter diagnostic analysis" mode.

Analysis and diagnosis provide two diagnosis modes, one is "Deep Vibration Diagnosis of Rotating Machine" and the other is "Motor Interactive Vibration Diagnosis". "Rotating motor deep vibration diagnosis" provides 17 vibration diagnosis, "motor interactive vibration diagnosis" provides 5 motor interactive diagnosis, which can be operated in accordance with the instructions of the APP.



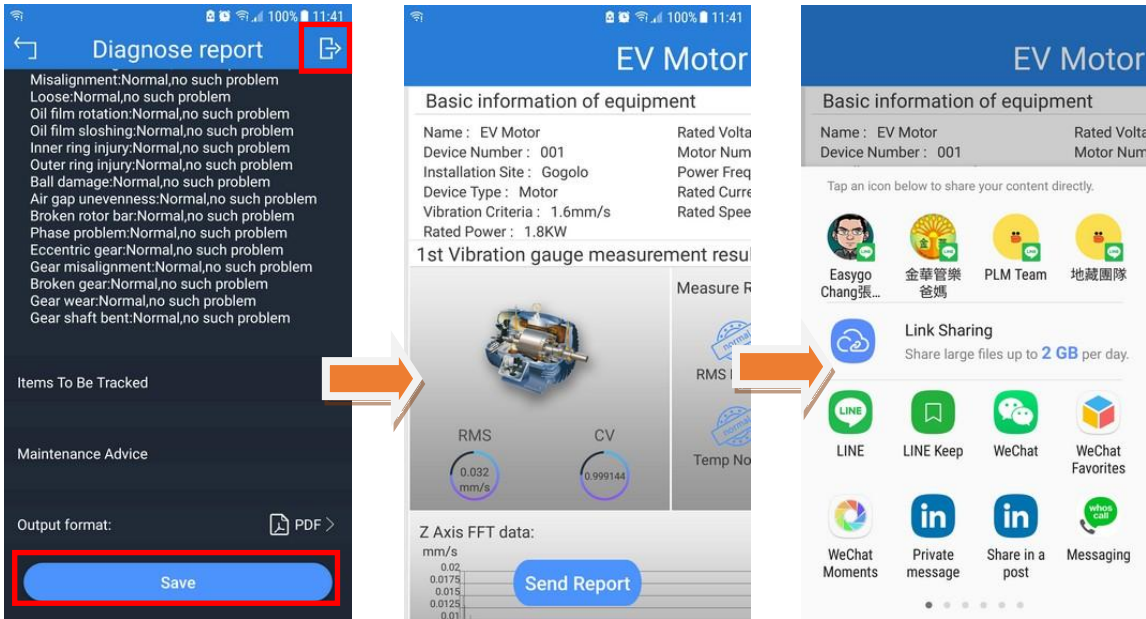
Pro-3600 APP Operation Manual



Report export

Save diagnostic report and export report

PS. When exporting the report, please make sure that WiFi or 4G/5G is connected to the Internet.



You can upload the measured data onto Routing-Check Database if you have installed it. See below.

