



TECOM

Converging Your Networks

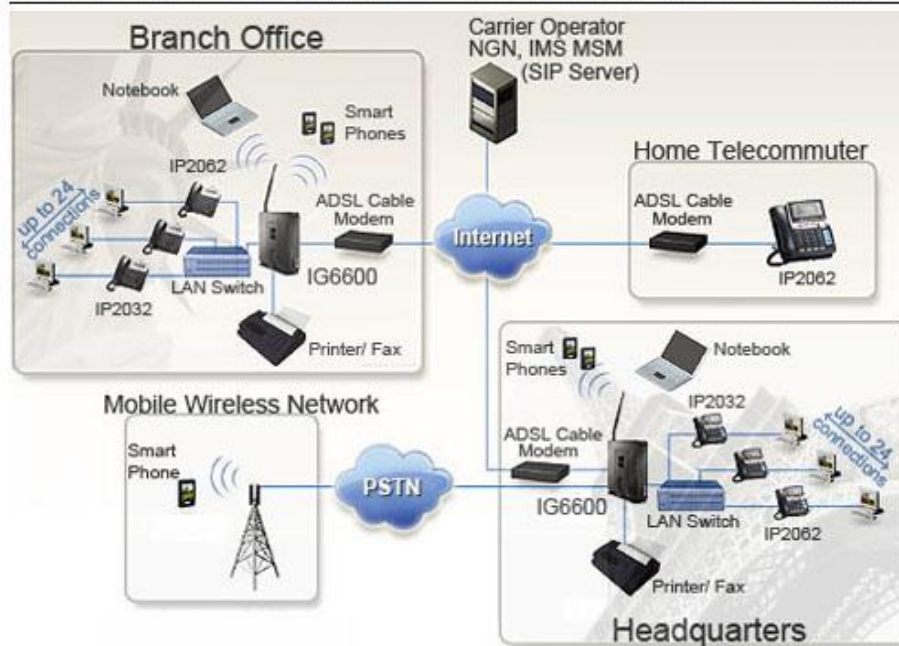
Enterprise Solutions Handbook

Ver. 01 250520

- Enterprise Solutions Overview -

1 of 6

IG6600 Intelligent Gateway: Multiple Office and Mobile Integration Network



A Custom-design Integrated Voice/Data Business System for VSE and SME.

- The IG6600 is a stand-alone, IP-based compact platform that provides simultaneous IP PBX with Auto Attendant and Voicemail, Internet Access and Wireless Access Point (WiFi).
- It equips VSE and SME users with all the essential office features and functions at a lower total cost of ownership than all current TDM solutions.
- It's smart Plug and Play, Ease-of-Use, requires no professional-installation, offering valued savings.
- It's VoIP open architecture is not limited by office boundaries, your IP Phone system can be located where there are broadband connections. In the locations having no broadband connections, this phone system can serve as a traditional PBX with its FXO connecting to PSTN networks.
- The IG6600 usually deploys four boxes for a VSE/SME, namely, the TDM-Key System, the voice-mail adjunct, the IP ATA adjunct, and the WiFi router, to enable an office-in-one-box network.

Products

- [IG6600 Intelligent Gateway](#)
- [IP2062 IP Phone](#)
- [IP2032 IP Phone](#)

IG6600 Intelligent Gateway: Fixed, IP, and Mobile Network Carrier Integration



A Custom-design Integrated Voice/Data Business System for VSE and SME Carrier Integration.

- The IG6600 is a stand-alone, IP-based compact platform that provides simultaneous IP PBX with Auto Attendant and Voicemail, Internet Access and Wireless Access Point (WiFi).
- It equips VSE and SME users with all the essential office features and functions at a lower total cost of ownership than all current TDM solutions.
- It's smart Plug and Play, Ease-of-Use, requires no professional-installation, offering valued savings.
- It's VoIP open architecture is not limited by office boundaries, your IP Phone system can be located where there are broadband connections. In the locations having no broadband connections, this phone system can serve as a traditional PBX with its FXO connecting to PSTN networks.
- The IG6600 usually deploys four boxes for a VSE/SME, namely, the TDM-Key System, the voice-mail adjunct, the IP ATA adjunct, and the WiFi router, to enable an office-in-one-box network.

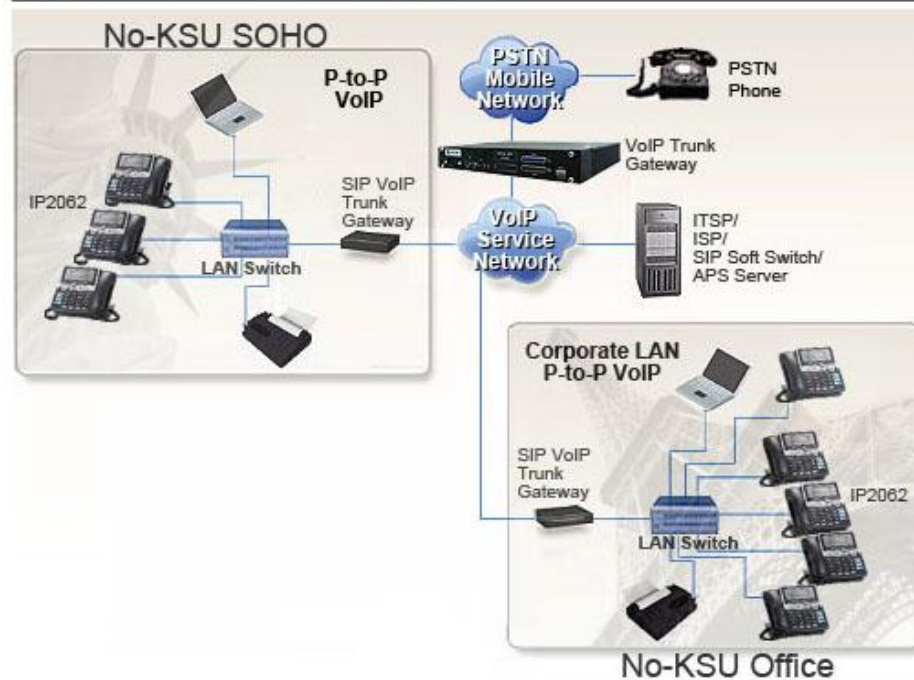
Products

- [IG6600 Intelligent Gateway](#)
- [IP2062 IP Phone](#)
- [IP2032 IP Phone](#)

- Enterprise Solutions Overview -

2 of 6

IP2062: NoKSU IP Phone Terminal Network



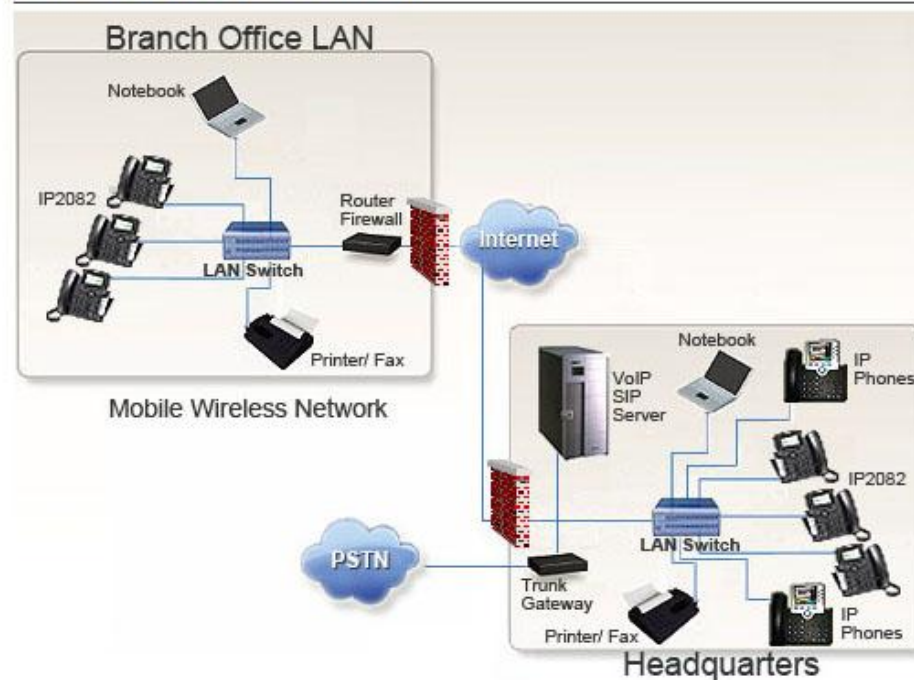
An ideal solution for enterprise and SME offices to connect with service provider softswitch or IP-PBX to enable cost-saving IP Telephony service.

IP2062 is an advanced SIP IP telephone that provides high quality audio for improved work efficiency for enterprise VoIP network environments. This empowers greater office work efficiency along with reducing corporate enterprise expenditure. The graphic display on the LCD menu makes the phone very easy to setup and operate.

Product

- IP2062 IP Terminal

IP2082: IP Phone Terminal Network



An advanced mid-level IP phone solution for enterprise office VoIP communications, SME or SOHO office applications.

It supports a variety of application requirements for ODM customization for a range of solutions, including different IP-PBX/ soft-switch / IP-Centrex (SIP-B) compatibility and generic SIP firmware running under a universal SIP server.

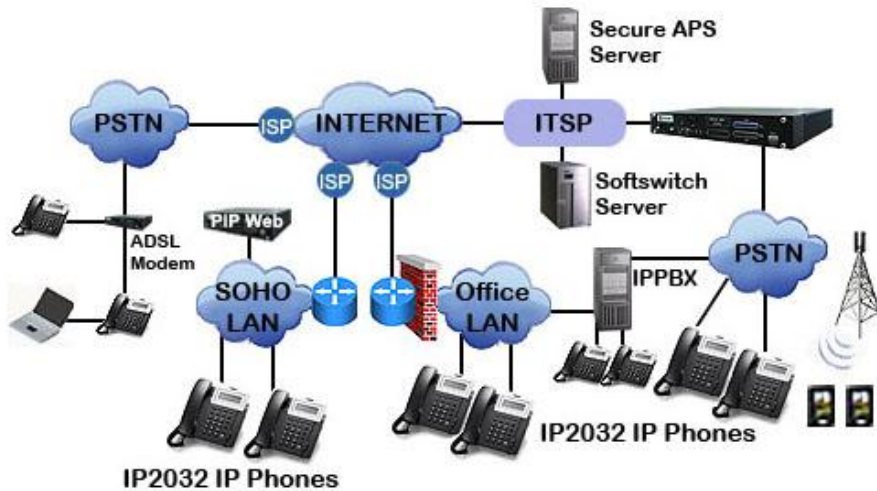
Product

- IP2082 IP Terminal

- Enterprise Solutions Overview -

3 of 6

IP2032: IP Phone Terminal Network



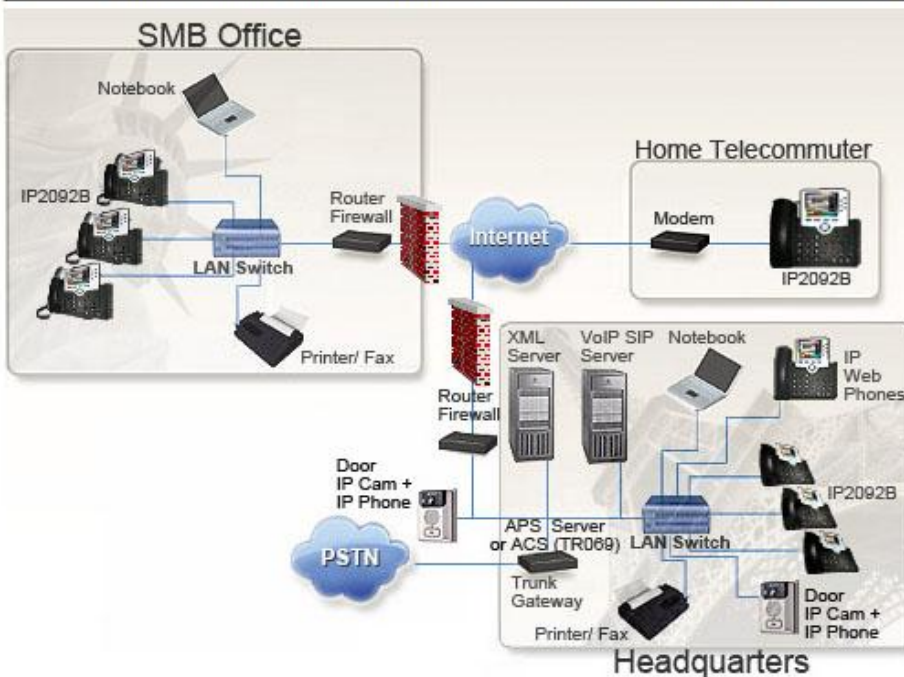
An economic SIP terminal for modern residential and office users.

With a full range of interoperability test certificates, it is extremely compatible with a variety of Softswitches and IP-PBX servers, suitable for general application use in the home, SOHO, SME and enterprises.

Product

- [IP2032 IP Terminal](#)

IP2092B: Web IP Phone Terminal Network: Enterprise, SMB Offices & Home Telecommuter



For Enterprise and SMB Offices Supporting ISP/ITSP for VoIP SIP Service Applications.

An ideal solution for business VoIP communications in modern enterprises, SMB Offices, Enterprise and Home Telecommuter. The IP2092B IP Web phone is an advanced IP Phone interoperable with popular VoIP SIP servers, Soft switch, IPPBX systems and XML servers.

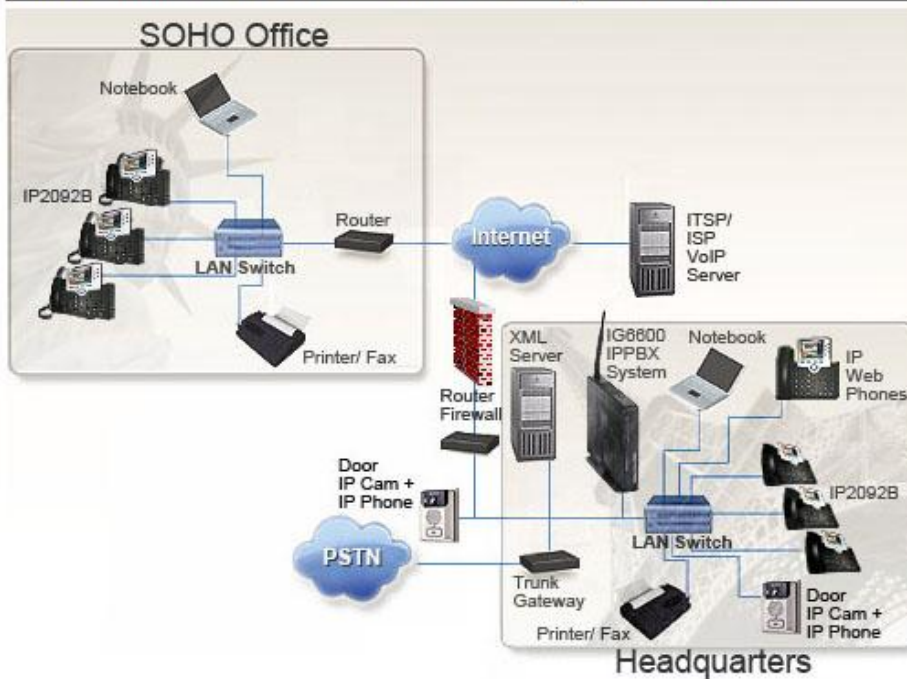
Product

- [IP2092B IP Web Phone](#)

- Enterprise Solutions Overview -

4 of 6

IP2092B: Web IP Phone Terminal Network: Enterprise & SOHO Offices



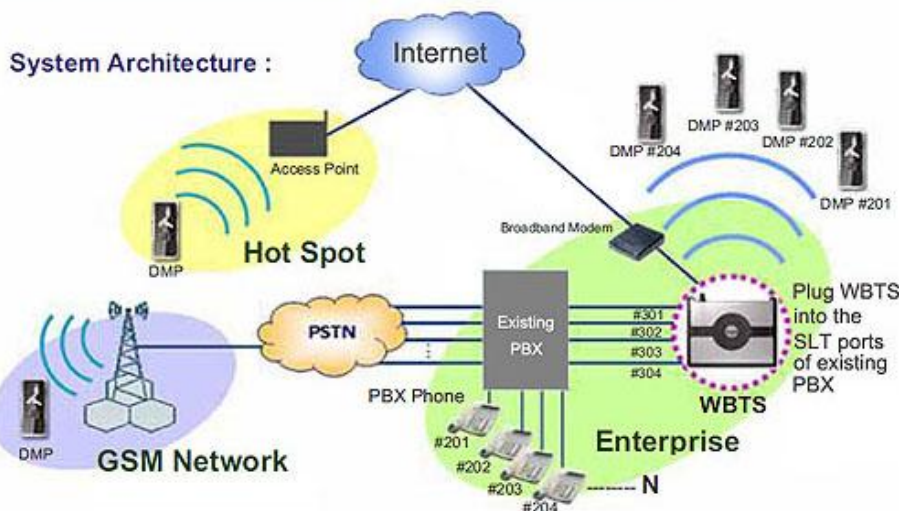
For Enterprise and SOHO Offices with XML Server Support and an IPPBX System

An ideal solution for business VoIP communications in modern enterprises, SOHO offices. The IP2092B IP Web phone is an advanced IP Phone interoperable with popular VoIP SIP servers, Soft switch, IPPBX systems and XML servers.

Product

- [IP2092B IP Web Phone](#)

WBTS: Wireless Base Transceiver Station Network Solution



Tecom's Universal Wireless Solution (UWSTM) is a total solution for PBS/KTS that provides important mobility functions for users around office premises or when traveling abroad.

It is a wireless station installed behind the line port of an existing PBS/KTS that provides data and voice services. The Dual Mode Phone (DMP) is a feature-rich GSM Handset with Wi-Fi and VoIP capability. This solution enables users to easily receive/access calls to/from PBS/KTS while away from their desk or travelling around the world wherever a Wi-Fi access is available.

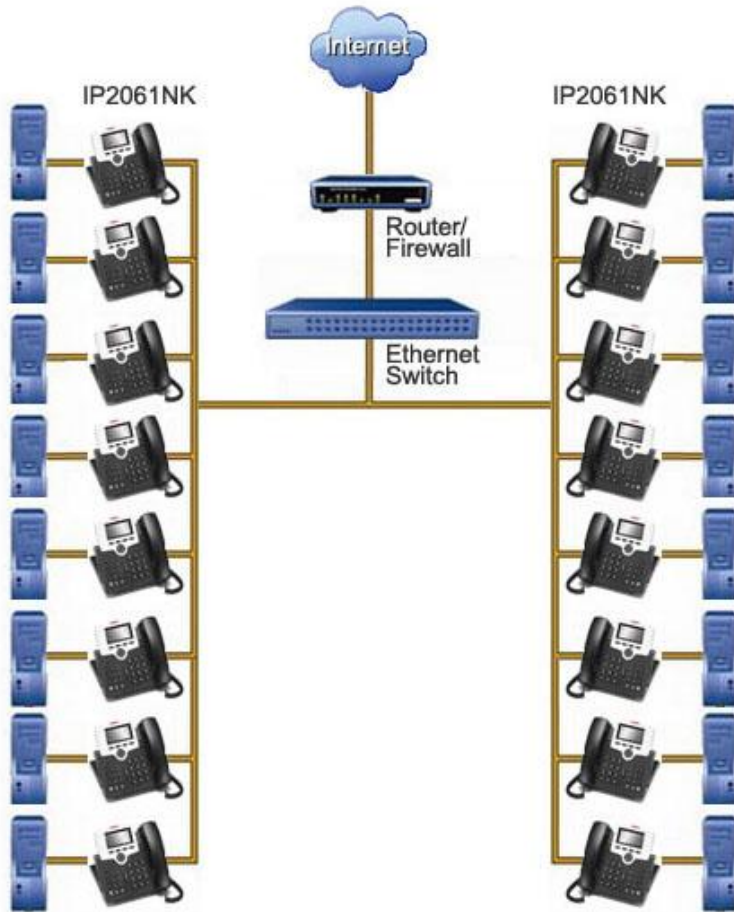
Product

- [Wireless Base Transceiver Station](#)

- Enterprise Solutions Overview -

5 of 6

IP2061NK: Peer-to-Peer NoKSU IP Phone Terminal Network



Tecom's IP2061NK NoKSU IP Phone supports simple low-cost but very powerful VoIP phone systems for small offices.

This smart office solution has the benefit of not requiring iPBX or IP-KTS support. It can also link-up 16 IP phones together with an array of supplementary call features. When connecting to the outside via PSTN, it can operate with different IP-PBX settings, softswitch, IP-Centrex such as SIP-B, or via a SIP server.

Product

- [IP2061NK IP NOKSU Terminal](#)

X-16 Small Office Digital System Network



A perfect SOHO, SMB and SME communications solution.

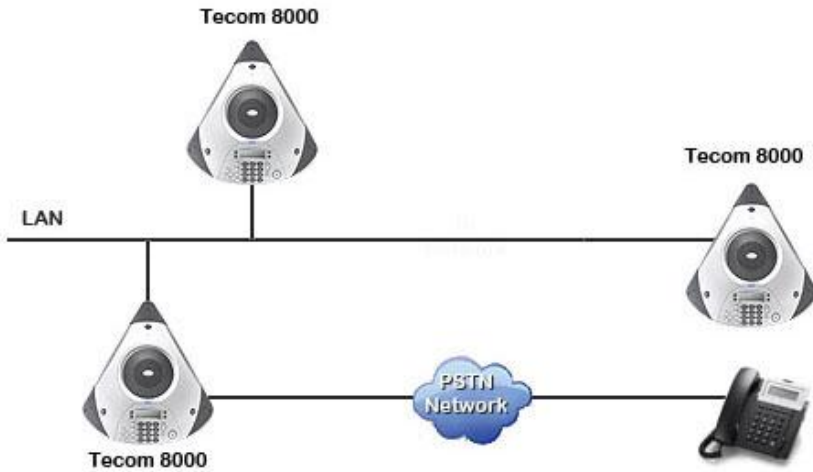
F fully featured, multi-line business phone ideally suitable for home or small office use, designed to receive up to 6 regular telephone lines with 2 optional line circuits for Voice over IP linkup.

Up to 16 fully-functional digital key telephones can be connected to the system more easily than in any other applications.

Product

- [X-16 Small Office Digital System](#)

Tecom 8000: TECOM Conference Phone



The TECOM-8000 FDX Conference Phone has a powerful Digital Signal Processor for superior acoustic performance to accommodate multiple conferencing parties.

Its microphones are designed to compensate for loud and soft conversation whilst eliminating interfering background noise. It can be linked up to an IP Network and the PSTN line.

Product

- [Tecom 8000 Conference Phone](#)